



MICHAEL GASTER
+
ASSOCIATES
PO BOX 30038, SAVANNAH, GEORGIA 31410
912.373.8133

Entertainment Systems Design + Engineering

ALL IDEAS, ARRANGEMENTS AND PLANS INDICATED OR REPRESENTED BY THIS DRAWING ARE OWNED BY AND THE PROPERTY OF MICHAEL GASTER + ASSOCIATES. THESE DRAWINGS CONSTITUTE INTELLECTUAL PROPERTY OF MICHAEL GASTER + ASSOCIATES. THEY SHALL NOT BE REPRODUCED, COPIED OR REPRODUCED IN ANY WAY SHAPE OR FORM WITHOUT PERMISSION

Tybee Post Theatre

REVISIONS

NO.	DATE	DESCRIPTION

SCALE

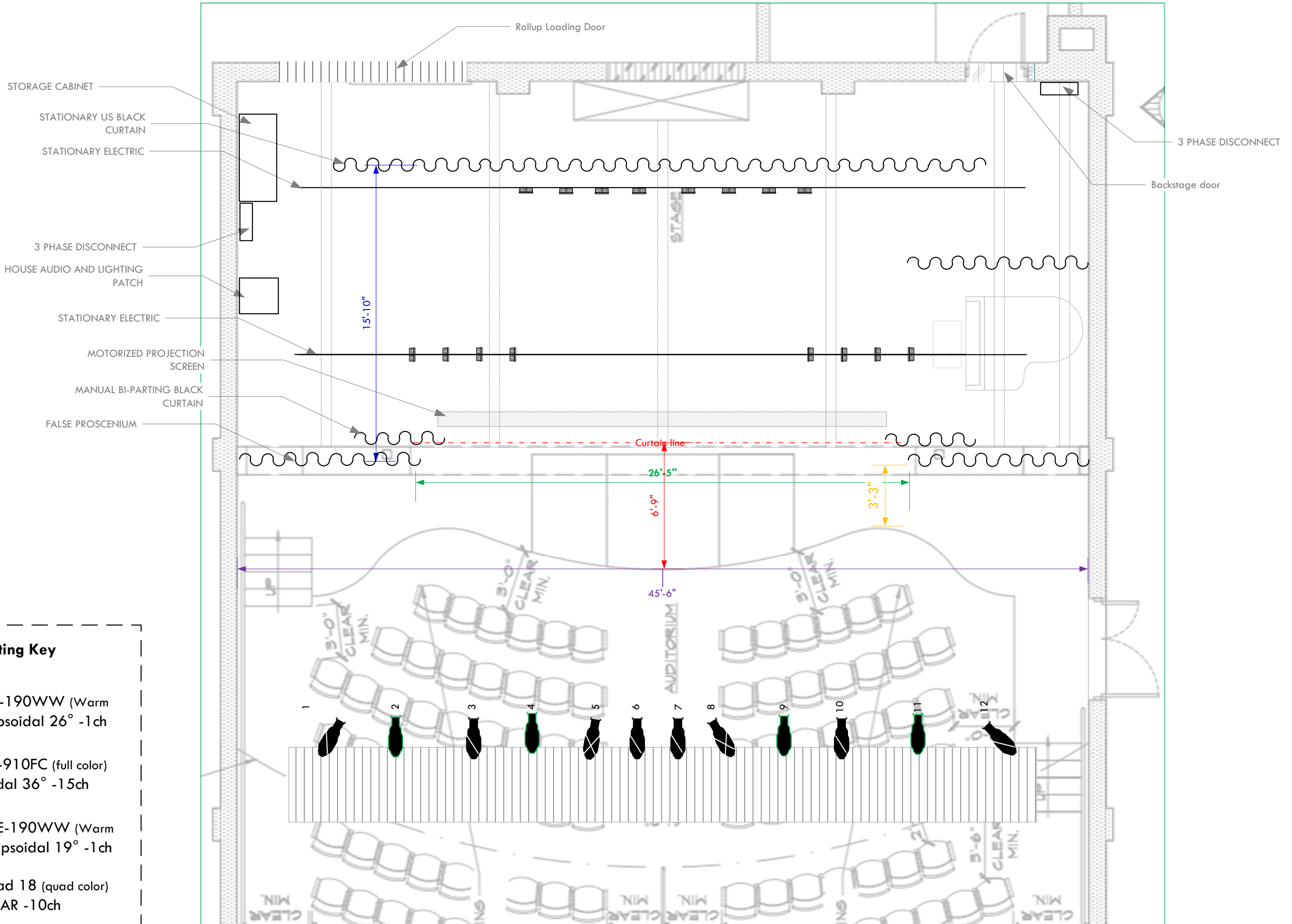
ISSUED

DRAWN BY

DRAWING TITLE

Stage and Lighting Plot

SHEET NO.



Lighting Key

-  Ovation E-190WW (Warm White) Ellipsoidal 26° -1ch
-  Ovation E-910FC (full color) Ellipsoidal 36° -15ch
-  Ovation E-190WW (Warm White) Ellipsoidal 19° -1ch
-  PAR Quad 18 (quad color) PAR -10ch